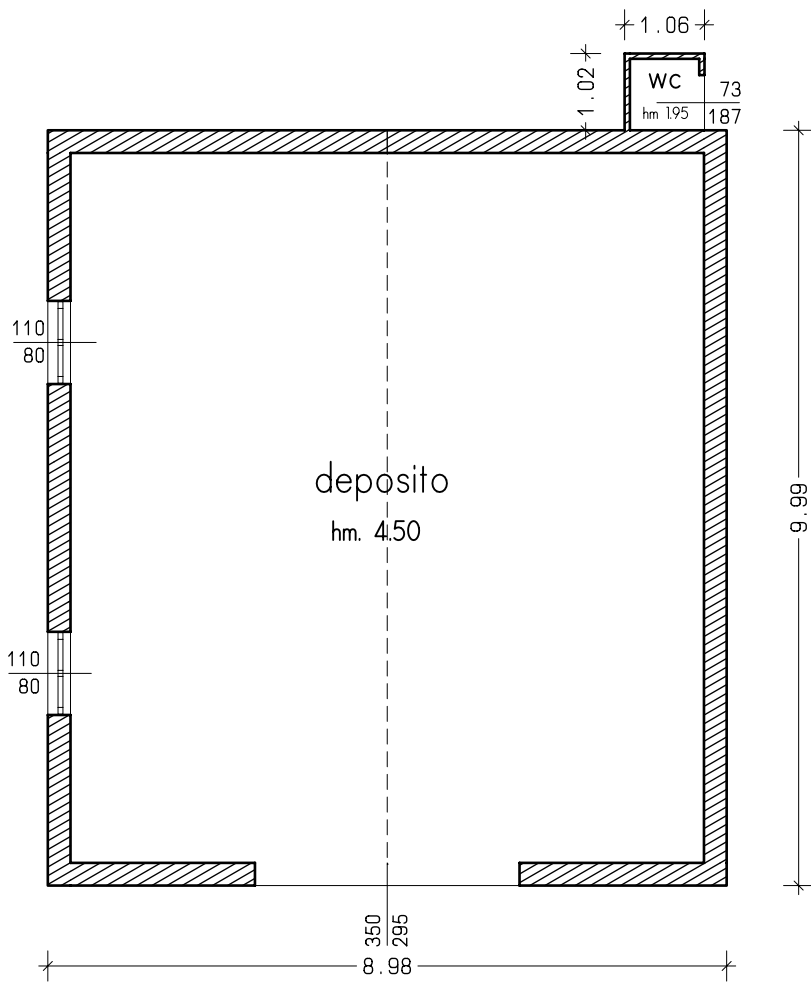
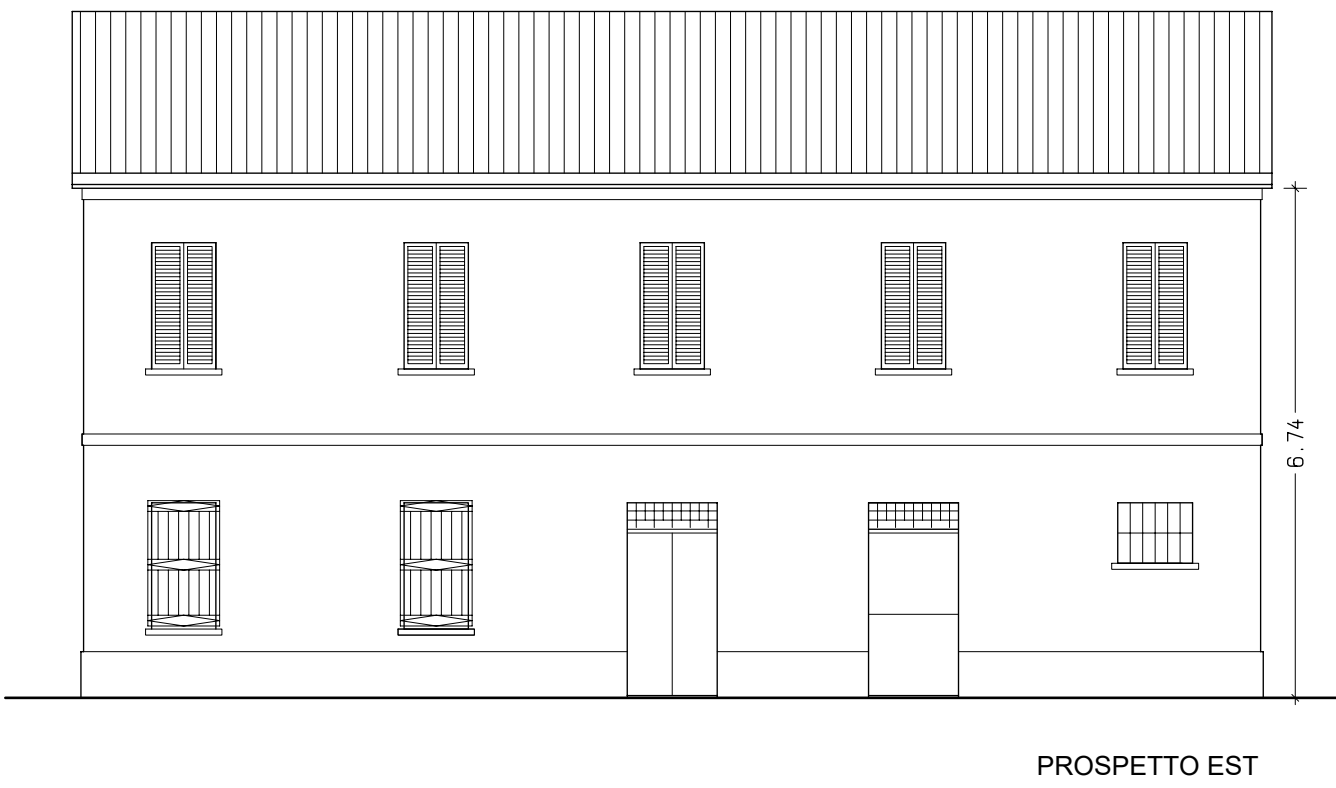
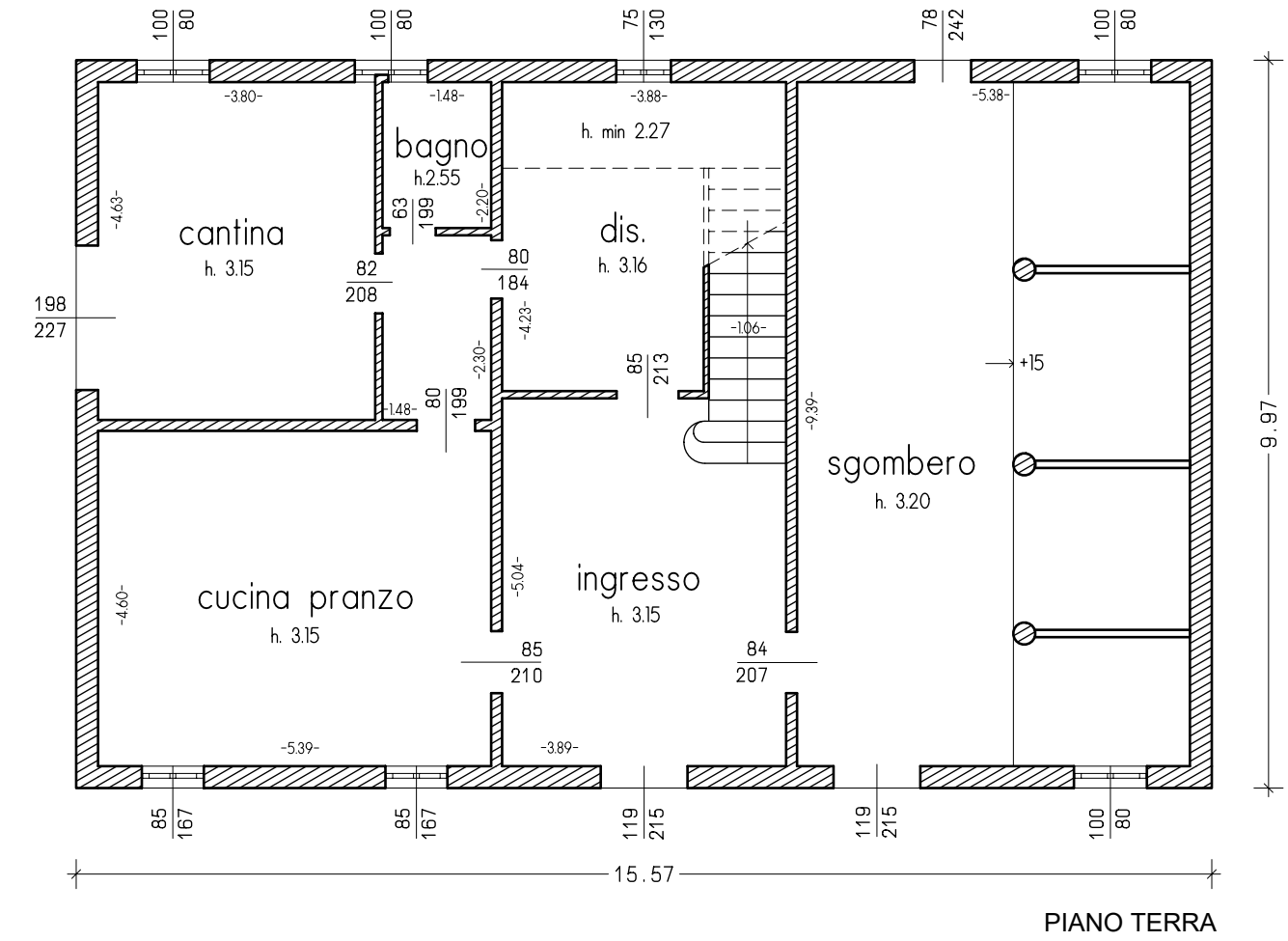
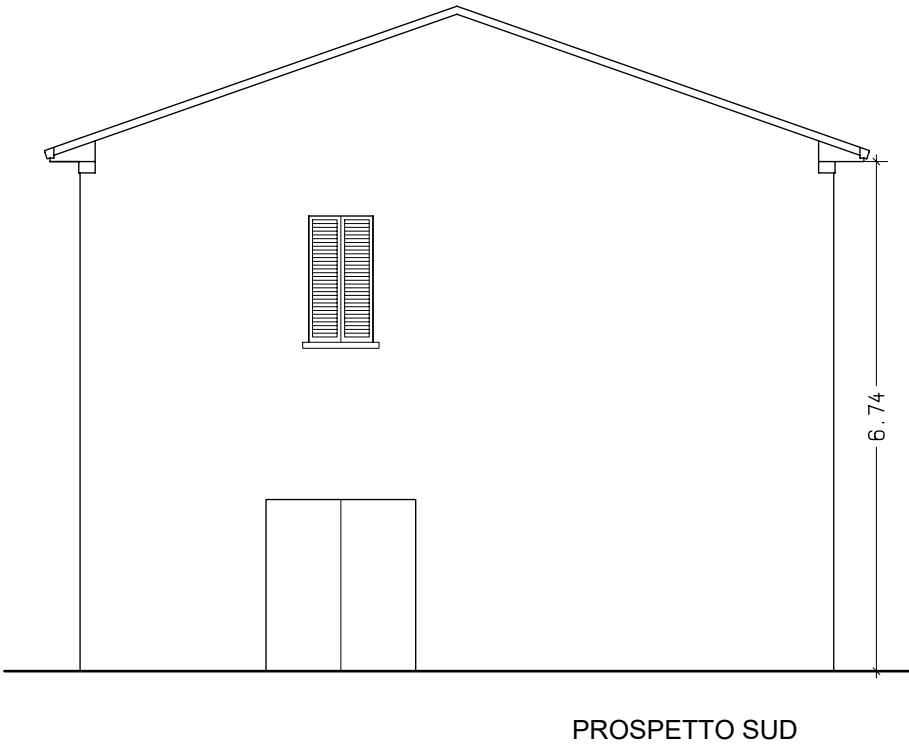
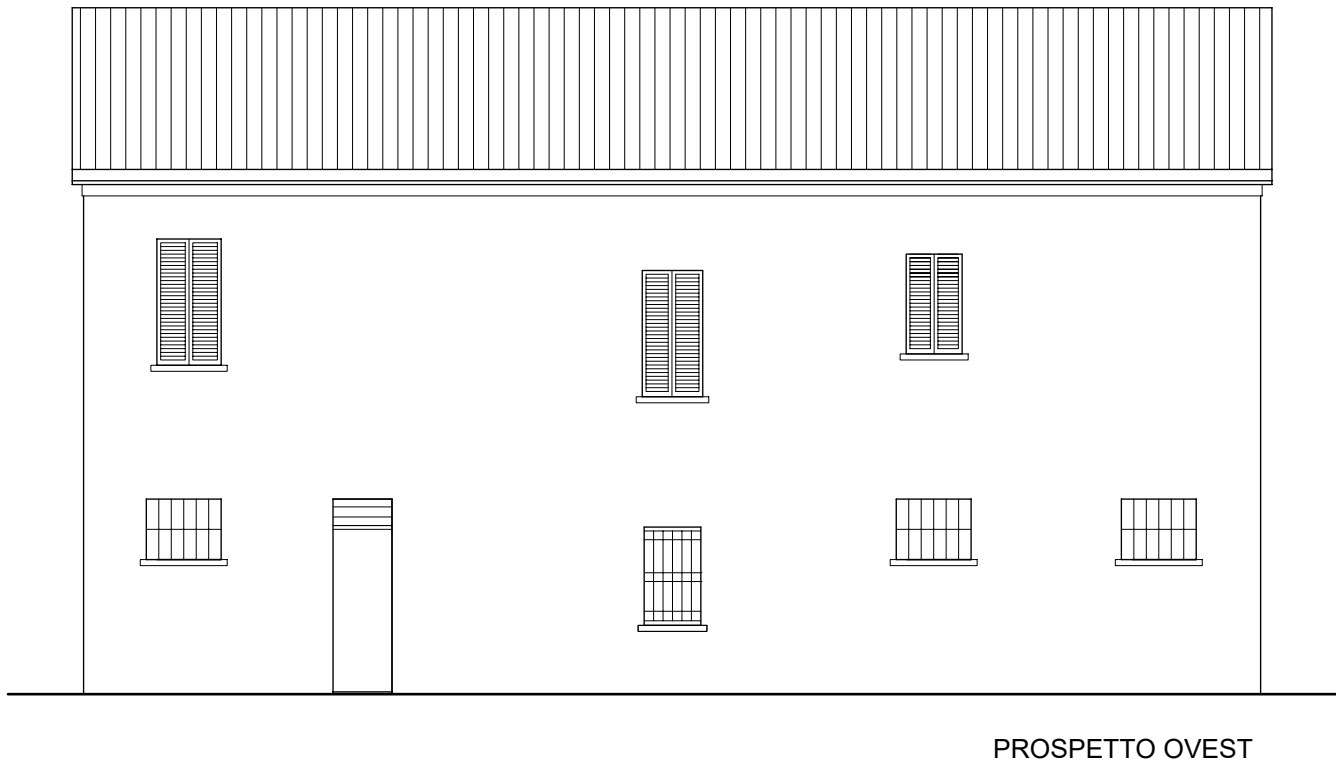
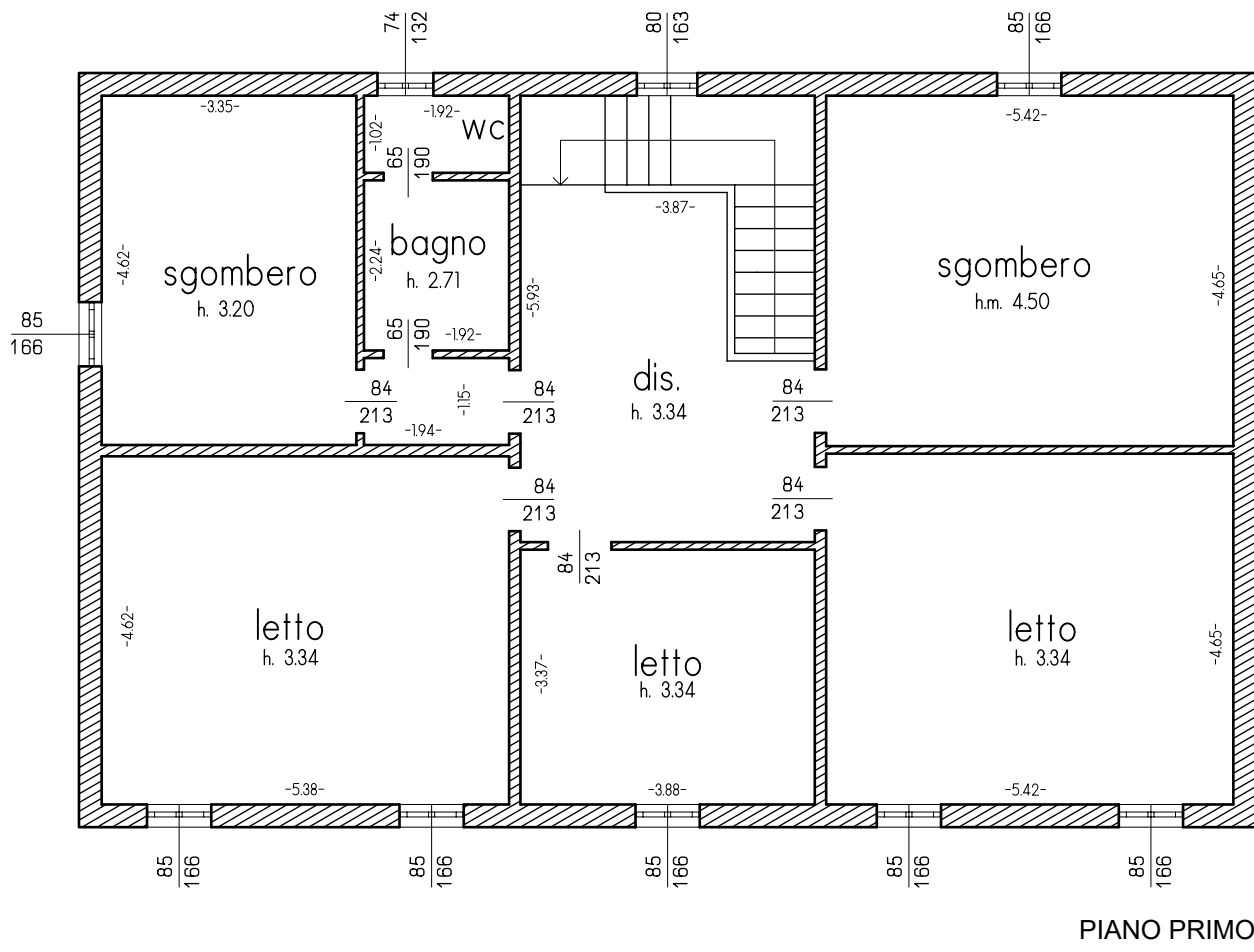


FIENILE



DEPOSITO

ABITAZIONE



Dott. Ing. Marco Medici via F.lli Ferrucci 22/2 Lugo tel. 0545.22524 e-mail info@marcomedici.it		
COMMITTENTE		
MONTINI & C. s.n.c., via Alberico da Barbiano 8/10 - 48022 Lugo (RA)		
PROGETTO		DATA
PROCEDIMENTO DI VARIANTE URBANISTICA		09/2021
ACCELERATA AI SENSI DELL'ART.8 DPR n.160/2010		SCALA
PER COSTRUZIONE DI NUOVO PIAZZALE		scala 1:250
via Alberico da Barbiano 8, Lugo		TAVOLA
RILIEVO FABBRICATI ESISTENTI DA DEMOLIRE		2 rev.00
INTEGRALMENTE-ABITAZIONE, DEPOSITO, FIENILE		